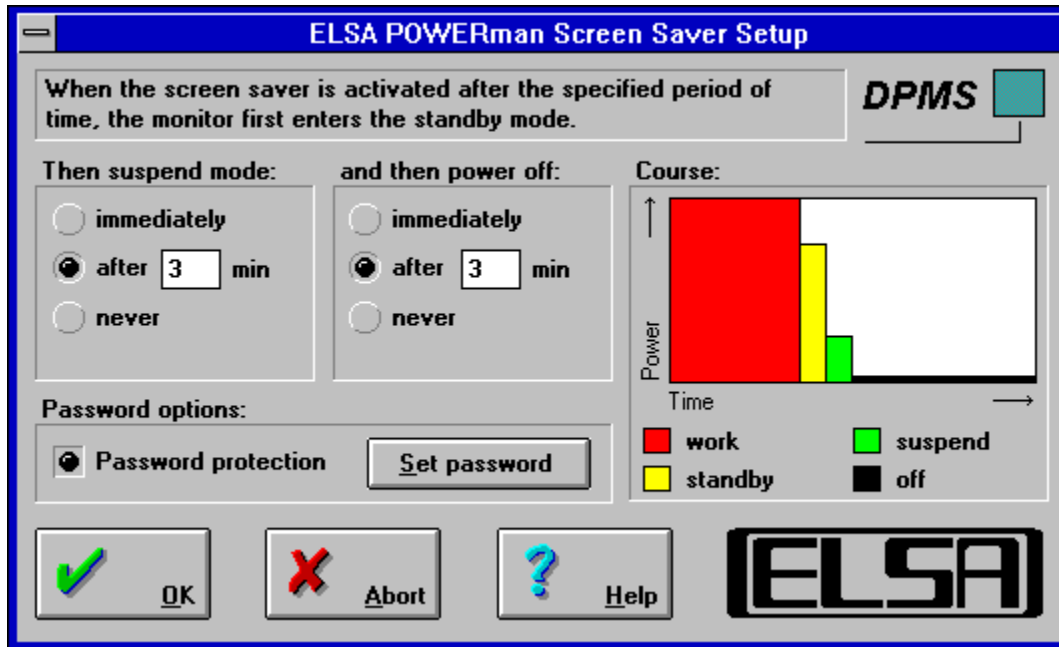


Please click the desired Help option:



Clicking the Cancel button leaves the box without saving any changed values.

The HELP button activates the context-sensitive Help function.



In the system menu you can change the dialog language of this tool.  
All available languages are listed here.

Full Operation is the inactive mode of the screen saver.

As long as entries are made using the keyboard or the mouse, you will not notice that a screen saver is active. After a certain time of inactivity (preset in the Desktop settings of the Windows Control Panel) the monitor will switch to [Standby Mode](#).

#### **Referenz**

[Standby Mode](#)

[Suspend Mode](#)

[Switch Off](#)

In Standby Mode the screen is set to black. This prevents a displayed image from 'burning' into the surface of the monitor tube. As soon as a keystroke or mouse movement is made, the monitor switches back to [Full Operation](#).

If no entries occur within a certain amount of time set in **POWERman**, the monitor will switch to [Suspend Mode](#).

In Standby Mode the monitor has approx. 90% of its normal power consumption.

#### **Reference**

[Full Operation](#)

[Suspend Mode](#)

[Switch Off](#)

In Suspend Mode the monitor tube is switched off. This saves energy, but also allows switching back to Full Operation relatively quickly.

In the **POWERman** dialog box you can choose when the monitor should switch from Standby Mode to Suspend Mode:

- immediately
- after a certain time (set by the user) or
- never

In Suspend Mode the monitor has approx. 20% of its normal power consumption.

## **Reference**

Full Operation

Standby Mode

Switch Off

Switch Off means that all the circuits of the monitor are switched off, except for the power supply. This is like switching off a TV by remote control.

In the **POWERman** dialog box you can choose when the monitor should be switched off:

- immediately
- after a certain time (set by the user) or
- never

Switched off in this manner the monitor has approx. 3% of its normal power consumption.

## **Reference**

[Full Operation](#)

[Standby Mode](#)

[Suspend Mode](#)



When the Password Protection is active, the screen saver will prompt you to enter a password before switching back to [Full Operation](#).

You can define the password by clicking the [Change Password](#) button.

#### **Reference**

[Change Password](#)

Upon clicking the Change Password button you will be presented a dialog box where you can define a new password. If a password already exists, you need to know and enter it before you can change it.

#### **Reference**

[Password Protection](#)



# POWERman

VESA™ DPMS Screen Saver

Version 1.05

Copyright © 1993-95 ELSA GmbH, Aachen (Germany)

---

